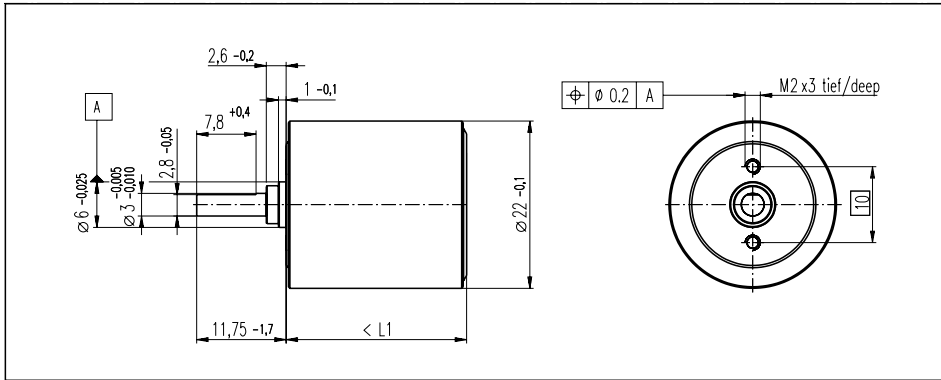


Planetary Gearhead GP 22
 Ø22 mm, 0.1-0.3 Nm



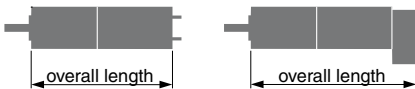
Technical Data

Planetary Gearhead	straight teeth
Housing	steel
Output shaft	stainless steel, hardened
Bearing at output	sleeve bearing*
Radial play, 6 mm from flange	max. 0.06 mm
Axial play	0.02 - 0.10 mm
Max. permissible axial load	8 N
Max. permissible force for press fits	100 N
Recommended input speed	< 6000 rpm
Recommended temperature range	-15/+65°C
Number of stages	1 2 3 4 5
Max. perm. radial load, 6 mm from flange	8N 12N 16N 20N 20N

*Option ball bearings

Gearhead Data:

Order number	110355	110356	110357	118653	110358	134772	110359	134775
1 Reduction	4.4 : 1	19 : 1	84 : 1	157 : 1	370 : 1	690 : 1	1621 : 1	3027 : 1
2 Reduction absolute	57/13	3249/169	185193/2197	19683/125	10556001/28561	1121931/1625	601692057/371293	63950067/21125
Order number	118651	134767	134768		134770	118654	134773	134776
1 Reduction	5.4 : 1	24 : 1	104 : 1		455 : 1	850 : 1	1996 : 1	3728 : 1
2 Reduction absolute	27/5	1539/65	87723/845		5000211/10985	531441/625	285012027/142805	30292137/8125
Order number		118652	134769		134771		134774	118655
1 Reduction		29 : 1	128 : 1		561 : 1		2458 : 1	4592 : 1
2 Reduction absolute		729/25	41553/325		2368521/4225		135005697/54925	14348907/3125
3 Number of stages		1	2	3	3	4	4	5
4 Max. continuous torque at gear output	Nm	0.10	0.15	0.20	0.20	0.25	0.25	0.30
5 Intermittently permissible torque at gear output	Nm	0.150	0.225	0.300	0.300	0.375	0.375	0.450
6 Sense of rotation, drive to output		=	=	=	=	=	=	=
7 Max. efficiency	%	90	81	73	73	65	65	59
8 Weight	g	39	48	57	57	65	65	73
9 Gearhead length L1	mm	16.0	19.6	23.2	23.2	26.8	26.8	30.4



Stock program
 Standard program
 Special program (on request!)

Combination:

+ Motor	Page	+ Tacho	Page	Overall length [mm]							
A 2522, 3.8 W 81/82				48.4	52.0	55.6	55.6	59.2	59.2	62.8	62.8
A 2522, 3.8 W 82		DC-Tacho 22	173	69.4	73.0	76.6	76.6	80.2	80.2	83.8	83.8
A 2522, 3.8 W 82		Digital Encoder 22	174	64.6	68.2	71.8	71.8	75.4	75.4	79.0	79.0
A 2522, 5 W 83/84				50.7	54.3	57.9	57.9	61.5	61.5	65.1	65.1
A 2522, 5 W 84		DC-Tacho 22	173	71.7	75.3	78.9	78.9	82.5	82.5	86.1	86.1
A 2522, 5 W 84		Digital Encoder 22	174	66.9	70.5	74.1	74.1	77.7	77.7	81.3	81.3
A-max 19 101-104				45.0	48.6	52.2	52.2	55.8	55.8	59.4	59.4
A-max 19 101/103		Digital Magnetic Encoder 13	184	52.5	56.1	59.7	59.7	63.3	63.3	66.9	66.9
A-max 19 102/104		Digital Encoder 22	175	59.5	63.1	66.7	66.7	70.3	70.3	73.9	73.9
A-max 22 105-108				48.0	51.6	55.2	55.2	58.8	58.8	62.4	62.4
A-max 22 105/107		Digital Magnetic Encoder 13	184	55.1	58.7	62.3	62.3	65.9	65.9	69.5	69.5
A-max 22 106/108		Digital Encoder 22	175	62.5	66.1	69.7	69.7	73.3	73.3	76.9	76.9