

**PCI1PM**

**Instruction Manual**

**StarTech.com**

Hard-to-find made easy

StarTech.com has been making "hard-to-find easy" since 1985, providing high quality solutions to a diverse IT and A/V customer base that spans many channels, including government, education and industrial facilities to name just a few. We offer an unmatched selection of computer parts, cables, A/V products, KVM and Server Management solutions, serving a worldwide market through our locations in the United States, Canada, the United Kingdom and Taiwan.

Visit [www.startech.com](http://www.startech.com) today for complete information about all our products and to access exclusive interactive tools such as the Cable Finder, Parts Finder and the KVM Reference Guide.

# PCI Parallel Adapter

**1-Port Remappable PCI Parallel  
Adapter Card**

**StarTech.com**

Hard-to-find made easy

Manual Revision: 11/23/2010  
For the most up-to-date information, please visit [www.startech.com](http://www.startech.com)

# Table of Contents

<b>Introduction</b> .....	<b>1</b>
Packaging Contents.....	1
System Requirements.....	1
<b>Installation</b> .....	<b>2</b>
DIP Switch Settings.....	2
Hardware Installation.....	3
Driver Installation.....	3
Legacy ISA Address Mode.....	3
Standard Plug-and-Play Mode.....	9
<b>Specifications</b> .....	<b>10</b>
<b>Technical Support</b> .....	<b>11</b>
<b>Warranty Information</b> .....	<b>11</b>

## Introduction

The PCI1PM Re-mappable 1 Port PCI Parallel Card adds one fully featured I/O mapped IEEE 1284 parallel port to your system using a PCI expansion slot.

Saving time and money in costly upgrades of legacy hardware, the re-mappable parallel card can be installed and configured using legacy memory ranges (278, 378, and 3BC legacy ISA addresses) under DOS® and Windows® operating systems for compatibility with legacy devices such as security dongles that require a specific memory I/O range for operation.

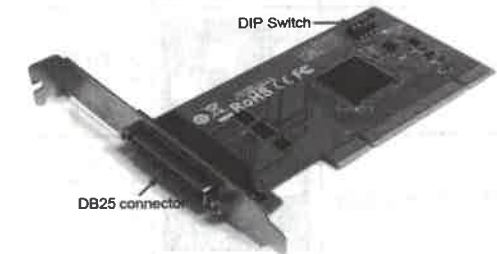
The card also supports standard installations, with plug-and-play WHQL certified drivers for Windows® as well as support for DOS® and Linux®.

## Packaging Contents

- 1 x PCI Parallel card
- 1 x Driver CD
- 1 x Instruction Manual

## System Requirements

- PCI enabled computer with available full height PCI slot
- Microsoft® Windows® XP/Server 2003/Vista/Server 2008 R2/7 (32/64-bit), or DOS, or Linux® kernel 2.4.x/2.6.x



## Installation

**WARNING!** PCI cards, like all computer equipment, can be severely damaged by static electricity. Be sure that you are properly grounded before opening your computer case or touching your PCI card. StarTech.com recommends that you wear an anti-static strap when installing any computer component. If an anti-static strap is unavailable, discharge yourself of any static electricity build-up by touching a large grounded metal surface (such as the computer case) for several seconds. Also be careful to handle the PCI card by its edges and not the gold connectors.

### DIP Switch Settings

This card supports both standard PCI Plug-and-Play mode, as well as the legacy ISA addresses 278, 378 and 3BC. Set the switches on the card to the desired mode, prior to installation.

System Assigned (PnP)		1 - OFF 2 - OFF 3 - OFF 4 - OFF
378 (Legacy ISA)		1 - ON 2 - ON 3 - OFF 4 - OFF
278 (Legacy ISA)		1 - ON 2 - OFF 3 - ON 4 - OFF
3BC (Legacy ISA)		1 - ON 2 - OFF 3 - OFF 4 - ON

## Hardware Installation

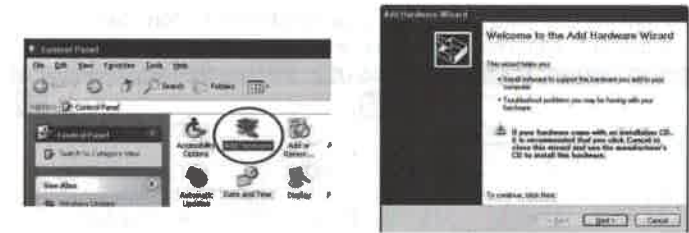
1. Turn your computer off and any peripherals connected to the computer (i.e. Printers, external hard drives, etc.). Unplug the power cable from the rear of the power supply on the back of the computer and disconnect all peripheral devices.
2. Remove the cover from the computer case. Refer to documentation for your computer system for details.
3. Locate an open PCI or PCI-X slot and remove the metal cover plate on the rear of the computer case.
4. Insert the card into the open PCI or PCI-X slot and fasten the card's bracket to the rear of the case.
5. Place the cover back onto the computer case.
6. Insert the power cable into the socket on the power supply and reconnect all other connectors removed in Step 1.

## Driver Installation

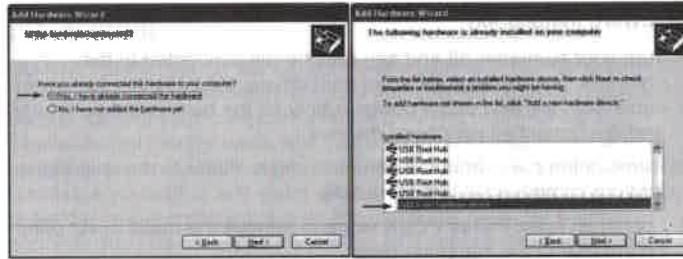
### Legacy ISA Address Mode

#### Windows 2000/XP/Server 2003/Vista

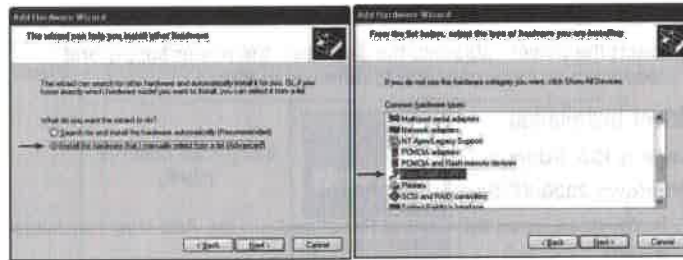
1. In Windows, open the Control Panel and run the Add New Hardware wizard.



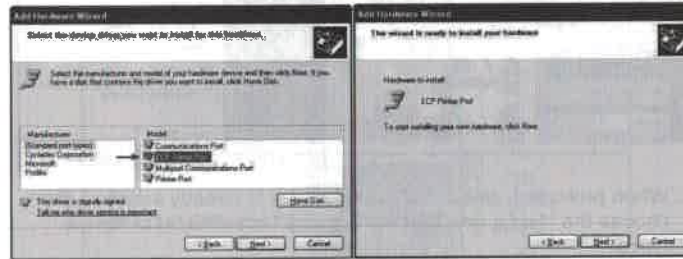
2. When prompted, select that the hardware is already installed, then choose the "Add a new hardware device" from the list of device types.



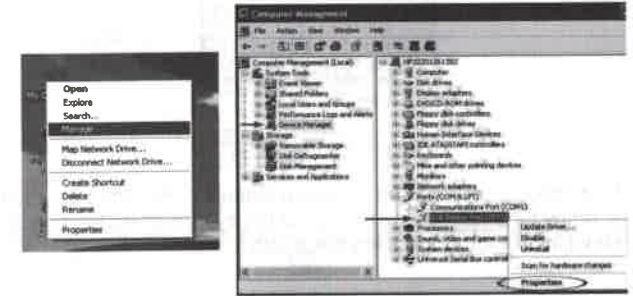
3. Select the option to install the hardware manually, then select "Ports" has the hardware type.



4. From the Standard Port Types, select ECP Printer Port, then proceed to complete the installation.



- Once the hardware wizard has completed, access the Device Manager by right-clicking on My Computer and selecting the "Manage" option. In the Computer Management window, select Device Manager from the left window panel.
- Locate the new port under the "Ports" category and right-click on it and select "Properties".

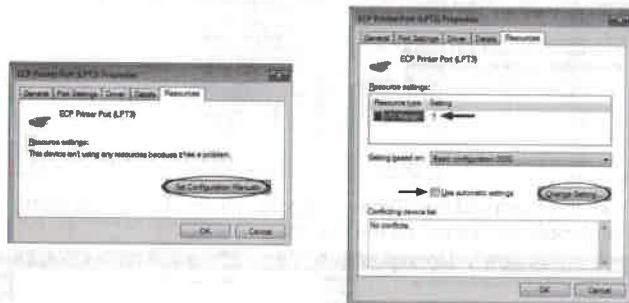


- In the Properties window, select the "Resources" tab along the top and click the "Set Configuration Manually" button.
- Select "I/O Range" under the Resource Settings then click the "Change Settings" button.





6. Select the "Resources" tab from along the top tabs and then click the "Set Configuration Manually" button.
7. Select the "I/O Range" field from Resource Settings and uncheck the "Use Automatic Settings" box, then click the "Change Settings" button.



8. Select the "Value" that matches the settings used for the adapter card and note any conflicts that appear. Accept the settings and reboot the computer.



9. If a conflict is not reported in Device Manager, then the port should be ready for use. Otherwise contact the system or motherboard manufacturer for a possible work around.

## Standard Plug-and-Play Mode

### Windows 2000/XP/Server 2003

1. When the Found New Hardware wizard appears on the screen, insert the Driver CD into your CD/DVD drive. If you are prompted to connect to Windows Update, please select the "No, not this time" option and click Next.
2. Select the option "Install Drivers Automatically (Recommended)" and then click the Next button.
3. Windows should now start searching for the drivers. Once this has completed, click the Finish button.

### Windows Vista/7/Server 2008 R2

1. When the Found New Hardware window appears on the screen, click on the "Locate and install drivers software (recommended)" option. If prompted to search online, select the "Don't search online" option.
2. When prompted to insert the disc, insert the Driver CD that came with the card, into your CD/DVD drive and Windows will automatically proceed to search the CD.
3. If a Windows Security dialog window appears, click the "Install this driver software anyway" option to proceed.
4. Once the driver is installed, click the Close button.

## Specifications

<b>Bus Interface</b>	PCI revision 2.3 (33MHz) 3.3V/5V compatible
<b>Form Factor</b>	Full Profile
<b>Chipset ID</b>	Sunix UL7512EQ
<b>External Connectors</b>	1 x DB25 female
<b>Supported Standards</b>	IEEE 1284-1994 (ECP/EPP/SPP/BPP)
<b>Maximum Data Transfer Rate</b>	1.8 Mbps
<b>FIFO Buffer</b>	16 Byte
<b>Operating Temperature</b>	0°C ~ 60°C (32°F ~ 140°F)
<b>Storage Temperature</b>	-20°C ~ 85°C (-4°F ~ 185°F)
<b>Humidity</b>	5% ~ 95% RH
<b>Dimensions</b>	121.0mm x 61.0mm x 13.0mm
<b>Weight</b>	75g
<b>Compatible Operating Systems</b>	Windows XP/Server 2003/Vista/ Server 2008 R2/7 (32/64-bit), DOS, Linux kernel 2.4.x/2.6.x

## Technical Support

StarTech.com's lifetime technical support is an integral part of our commitment to provide industry-leading solutions. If you ever need help with your product, visit [www.startech.com/support](http://www.startech.com/support) and access our comprehensive selection of online tools, documentation, and downloads.

## Warranty Information

This product is backed by a lifetime warranty.

In addition, StarTech.com warrants its products against defects in materials and workmanship for the periods noted, following the initial date of purchase. During this period, the products may be returned for repair, or replacement with equivalent products at our discretion. The warranty covers parts and labor costs only. StarTech.com does not warrant its products from defects or damages arising from misuse, abuse, alteration, or normal wear and tear.

### Limitation of Liability

In no event shall the liability of StarTech.com Ltd. and StarTech.com USA LLP (or their officers, directors, employees or agents) for any damages (whether direct or indirect, special, punitive, incidental, consequential, or otherwise), loss of profits, loss of business, or any pecuniary loss, arising out of or related to the use of the product exceed the actual price paid for the product. Some states do not allow the exclusion or limitation of incidental or consequential damages. If such laws apply, the limitations or exclusions contained in this statement may not apply to you.